

68-500 SERIES

High-Capacity Lab Table

Optional grid of tapped holes on table top

Massive 800 lb stainless steel laminate top increases stability and improves isolation.

Steel tiebars and gussets maximize frame rigidity.

Internal piston travel restraints

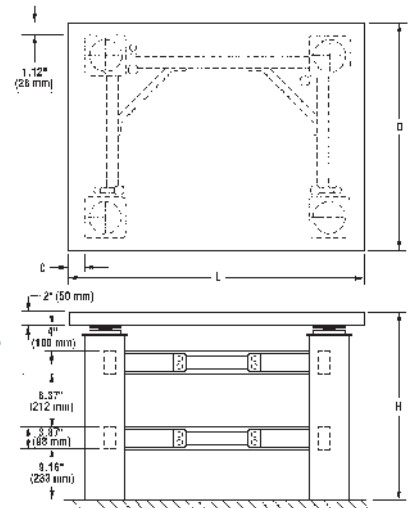


Gimbal Piston™ Isolators with thin-wall rolling diaphragms

All-aluminum height control valves

High-capacity frame for more massive loads

Optional casters retract into legs.



For table applications that require isolating over 350 lbs (160 kg) of net load, we recommend our 68-500 Series tables. They are similar in design to our 63-500 Series tables, with higher capacity isolators and a more massive stainless steel top plate.

In addition to high load applications, 68-500 Series tables are also recommended for payloads with unusually high centers of gravity and equipment with moving stages. These applications should benefit from the increased stability of the 68-500 design.

With a stiffer, more massive top plate, a lower natural frequency isolator, and stiffer, heavier leg frames, 68-500 Series tables provide performance that is markedly superior to any other passive table in the industry.

How to Order

See table ordering chart.

Optional Accessories

High-capacity casters that retract inside the leg frames are a convenient option with this table.

It is advisable to make this choice with the original order because retrofitting requires dismantling of the table.

A rigid front support bar, not in contact with the isolated surface, is useful as an armrest and can be easily retrofitted. This support bar is compatible with the armrest pads and articulated armrest described on page 56.

A rear support bar is required to allow mounting of sliding shelves when combined with front support bars. For sliding shelf ordering information, see page 56.

An equipment subshelf, mounted to the tiebars beneath the isolated surface, is made of wood covered with black plastic laminate and is easy to retrofit, see page 56.

Table Ordering Chart

Table Model	Description	L	D	H	C
68-561	Complete Table, 3 ft x 4 ft, no holes	47 in. (1,194 mm)	35.75 in. (908 mm)	30 in. (762 mm)	2.2 in. (56 mm)
68-563	Complete Table, 3 ft x 4 ft, 1/4-20 holes on 1" centers	47 in. (1,194 mm)	35.75 in. (908 mm)	31 in. (787 mm)	2.2 in. (56 mm)
68-564	Complete Table, 3 ft x 4 ft, M6 holes on 25mm centers	47 in. (1,194 mm)	35.75 in. (908 mm)	31 in. (787 mm)	2.2 in. (56 mm)
68-571	Complete Table, 3 ft x 5 ft, no holes	60 in. (1,524 mm)	35.75 in. (908 mm)	30 in. (762 mm)	9 in. (229 mm)
68-573	Complete Table, 3 ft x 5 ft, 1/4-20 holes on 1" centers	60 in. (1,524 mm)	35.75 in. (908 mm)	31 in. (787 mm)	9 in. (229 mm)
68-574	Complete Table, 3 ft x 5 ft, M6 holes on 25mm centers	60 in. (1,524 mm)	35.75 in. (908 mm)	31 in. (787 mm)	9 in. (229 mm)
Accessory Model	Description	L			
81-401-01	Front support bar and mounting clamps	48 in. (1,220 mm)			
81-401-02	Front support bar and mounting clamps	60 in. (1,524 mm)			
81-402-01	Rear support bar and mounting clamps	48 in. (1,220 mm)			
81-402-02	Rear support bar and mounting clamps	60 in. (1,524 mm)			
81-421-01	Subshelf				
83-013-01	Set of 4 retractable casters				

GENERAL SPECIFICATIONS

Isolator natural frequency:

High Input

Vertical = 1.0 Hz

Horizontal = 0.8 Hz

Low Input

Vertical = 1.2 - 1.7 Hz

Horizontal = 1.0 - 1.5 Hz

Isolation efficiency @ 5 Hz:

Vertical = 80 - 90%

Horizontal = 80 - 90%

Isolation efficiency @ 10 Hz:

Vertical = 90 - 99%

Horizontal = 90 - 99%

Gross load capacity:

4,000 lb (1,800 kg) @ 80 psi

Net load capacity:

1,200 lb (545 kg)

Finish: Medium texture black powder coat frame stainless steel top

Facilities required:

80 psi nitrogen or air