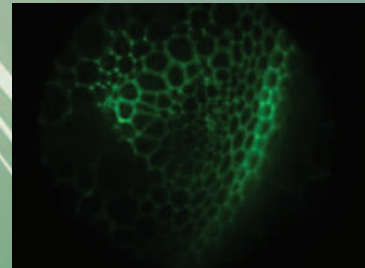
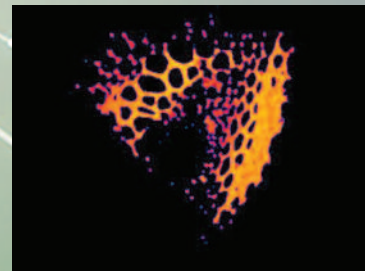




PHOTON LINES
Research

FAST FLIM

THE FASTEST TIME-DOMAIN FLIM PLATFORM



- ▶ Camera-based time-domain FLIM system
- ▶ Up to 100 Hz on the full sensor area
- ▶ Easy to use: integrated microscopy solution
- ▶ Multidimensional acquisition (xyz, t, λ , τ)
- ▶ Complete FLIM analysis package



Design / Sales / Training

Photon Lines SAS — Parc Pereire — Bât. B — 99 rue Pereire — F78100 St-Germain-en-Laye
www.photonlines.fr — +33 (0)1 30 08 99 00 — info@photonlines.com

A CAMERA-BASED TIME-DOMAIN FLIM PLATFORM

It records fluorescence life time decays in all pixels of the image in parallel.

FAST

- ▶ No trade-off between FLIM acquisition rate and image size.
- ▶ On typical real live-cells experiments*, the FLIM image rate easily reaches 10 fps.
- ▶ On fluorescent beads, the FAST FLIM can achieve up to 100 fps.
- ▶ All acquisition rates are given for the full sensor area.

DEDICATED FOR IN-VIVO DYNAMIC FRET MEASUREMENTS

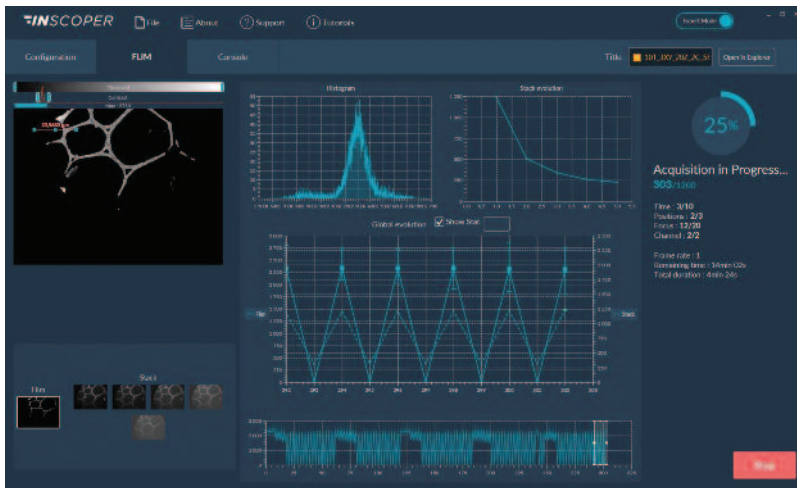
- ▶ Dynamic follow-up of molecular interactions and biochemical activities.
- ▶ Direct monitoring of molecular conformational changes by FRET.
- ▶ Autofluorescence characterization.
- ▶ Lifetime biosensors for ionic concentration.
- ▶ Dynamic pH measurements with spatial correlations.

To make available to cell biologists the FLIM approach, we needed a MULTI-MODAL time-domain FLIM solution that was FAST, SIMPLE to use, and that could SOLVE many of the different challenges brought by our scientific partners. The FAST FLIM is our answer to the increasing demand on fast lifetime imaging. Within minutes, our users are completely autonomous, which results in a better overall workflow in our platform.



*Marc Tramier
MRic Platform
Scientific Director*

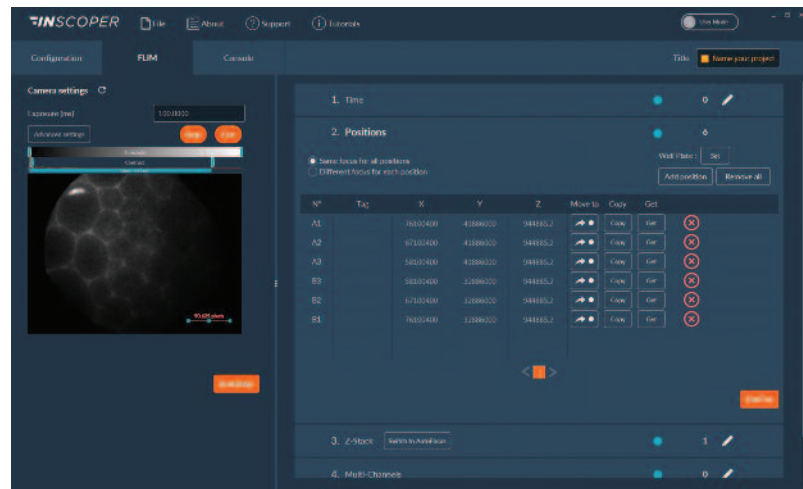
* FLIM acquisition rates will depend on the fluorescence sample properties (quantum yield, photo-stability, integration of the molecule in the media, i.e. fluorescence quenching, cell photo-toxicity...). As an example: on GFP labelled histones (HB-GFP), without bleaching, the FLIM rates reach 5 fps.



MADE IN
FRANCE

INSCOPER

igdrx



- ▶ **User friendly: made by scientists for scientists.**
- ▶ **Simple, adjustable, complete interface.**
- ▶ **Multi-dimensional acquisition: record time-lapses, multi-position, multi-color FLIM images, or any combination on a breathe.**
- ▶ **Focused on results: all the analysis tools you need in one page, data are processed in real time.**
- ▶ **Export your data in open source format...**



FAST FLIM ESSENTIAL



FAST FLIM MULTI-COLOR



FAST FLIM CONFOCAL

- ▶ **CAMERA**
100 fps, 2048x2048
- ▶ **IMAGE INTENSIFIER**
- ▶ **COMBO BOX**
- ▶ **FILTERS**
- ▶ **PULSED DIODE LASER**
- ▶ **SC LASER**
- ▶ **FAST TUNABLE FILTER**
- ▶ **CSU X1***

✓	✓	✓
✓	✓	✓
✓	✓	✓
✓	✓	✓
✓	✗	✗
✗	✓	✓
✗	✓	✓
✗	✗	✓

design graphique : onoffdesign.com +33 4 74 78 42 66 — 09-2018

* To be purchased separately.

Design / Sales / Training

Photon Lines SAS — Parc Pereire — Bât. B — 99 rue Pereire — F78100 St-Germain-en-Laye
www.photonlines.fr — +33 (0)1 30 08 99 00 — info@photonlines.com